



Connect with convenience.

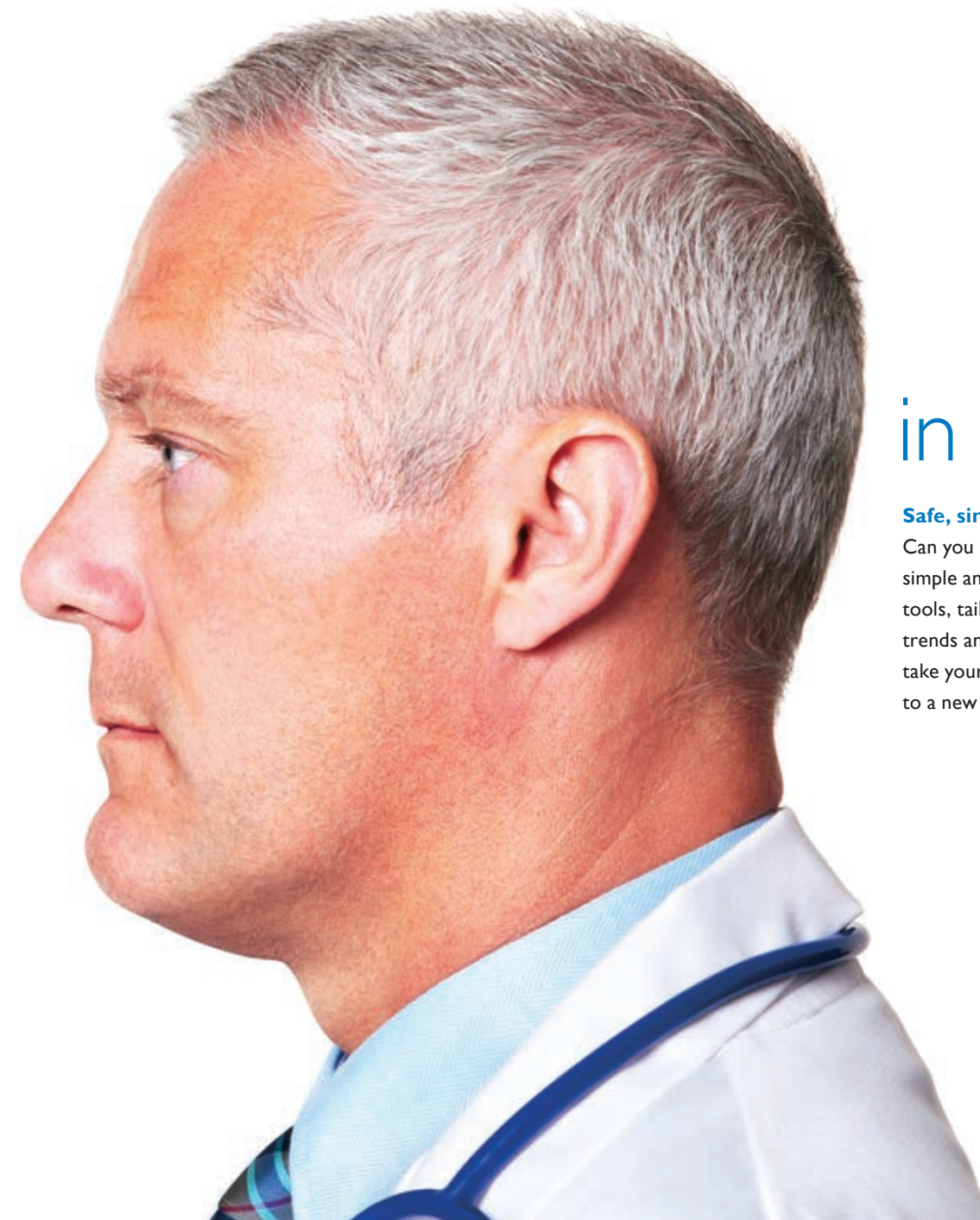
Expression IP5 information portal

PHILIPS
sense and simplicity

Closing the gaps

Connecting MR monitoring with your hospital IT system is now easier than ever. The Philips Expression IP5 information portal is your most convenient way to take your MR patient monitoring from the suite level across your enterprise.

Connectivity options let you easily send MR monitoring data to your EMR and anesthesia record-keeping systems in full compliance with hospital standards. Enhanced capabilities mean exceptional patient care and management throughout the MR imaging experience.



in information exchange.

Safe, simple patient management

Can you imagine an MR patient monitor this simple and sophisticated? Case management tools, tailored patient alarms, advanced trends analysis and customized user settings take your Expression monitoring capabilities to a new level.

Innovative integration with a proven partner

Only Philips can deliver this level of clinical informatics and Expression MR patient monitoring – a unique blend of performance and value never before seen in the industry. A single-source relationship with Philips makes good business sense, thanks to turnkey solutions, easy installation, and future scalability and upgradability.





Today, healthcare economics demand ever-more meaningful and interoperable clinical informatics systems, and Philips delivers. Our industry leadership in both clinical informatics and MR patient monitoring provides a more holistic approach to interoperability, continuity, and comprehensive patient care – right from the start.



Right. From the start.

Philips Clinical Informatics

Unique in the industry, the Philips suite of clinical informatics and patient care solutions complements your hospital's health IT investments. These tools operate easily with any EMR, EHR, and HIS, effectively streamlining the management and analysis of clinical patient data, simplifying clinician workflow and patient care, and enhancing financial outcomes. Our full range of services helps you draw maximum value from our clinical informatics capabilities.

Philips Expression MR patient monitoring

Our goal is to design solutions to be safer, smarter, simpler, and built with purpose. Designed for demanding MR environments. Proven successful in hospitals, Expression delivers meaningful information to help you make the right decisions – along with great patient comfort, improved productivity, and lasting reliability. Industry-leading wireless technology lets you move patients from room to room with ease, to help you improve patient management and workflow.





MR Suite

Expression Patient Monitor

Beyond connectivity

In wireless remote MR monitoring, you should expect a complete interoperability solution that resembles standard bedside monitors.

With the Expression IP5, you can easily integrate your MR patient safety strategy with your institution's overall information strategy. On its 19" widescreen display, you can access, view, and track vital signs in the MR control room without the need for extensive – and expensive – wireless router networks.

Interoperability options, today and going forward, all fully upgradeable and expandable for your future needs.



Easy implementation in any infrastructure

The Expression IP5 works with a host of integration engines and EMR systems. It's now easier than ever for you to customize the integration of your MR patient monitoring information with your hospital information systems or EMR.

Robust record keeping

The Expression IP5 monitor gives you the flexibility to output two sets of data in two different formats – HL7 and serial data – simultaneously to go to multiple record-keeping systems. You can also sync time with your HL7 server, so you have hospital network time on the device for consistent interoperability. It's the ultimate in connectivity in MRI, for complete electronic patient record keeping, data management, and hospital information system integration.

Peace of mind

We've got your back on interoperability. Our IT integration experts and solution architects provide integration into your site – both with products and the knowledge and expertise to adapt them to your specific environment.

A trusting relationship

With Philips, you're not just buying a system, you're deepening a relationship. From our design, to our portfolio of leading products and our Express service maintenance, you'll feel comfortable with the breadth and depth of the Philips brand – now and in the future.

to interoperability.



Smarter than ever.

The Expression IP5 elevates monitoring to management. It blends smart decision-making support with robust case-management capabilities, evolving to become intelligent and tailorable to the needs of you and your patients. Its advanced platform gives you more opportunities to gain deeper insights into a patient's condition – and helps in satisfying your never-ending quest for better decision support.



Case management

Case-management features provide quick, convenient access for patient processing – including streamlined admission and discharge using the wireless barcode scanner – and make it easy to link to the hospital information system for great efficiency. You can also freeze the ECG waveform and mark an event to make printed annotations.



Flexible trending

The Expression IP5 supports flexible trending information and reporting and advanced trends analysis. You can display arrows that indicate the direction of a patient's vital signs, configure displayed trend indications, and easily access trended patient data.



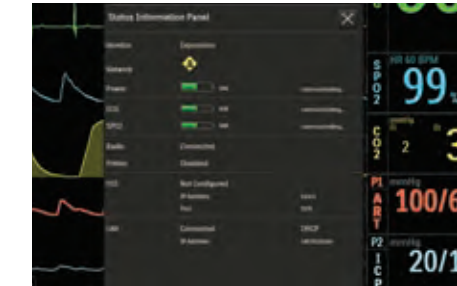
Alarm management

Visual and audible indications of physiological and technical alarms are designed to provide quick, accurate user alerts. Specialized alarm functions let you set individual alarm limits for all active parameters and calculate alarm limit settings for a specific patient that's being monitored. This helps to reduce nuisance alarms, allowing you to focus on individual patient situations.



Custom settings

Editable user settings let you custom-configure and store multiple setups for different procedures, patient types, and users, and conveniently select one at power up or during operation. All settings can also be saved for sharing with the host patient monitoring system.



Status overview

A status overview information box shows you at a glance that every element of your Expression monitoring system is working correctly. It visualizes information about everything from your monitor battery power to your printer to your connectivity, to help you assess your system's status quickly.



Enjoyable to use

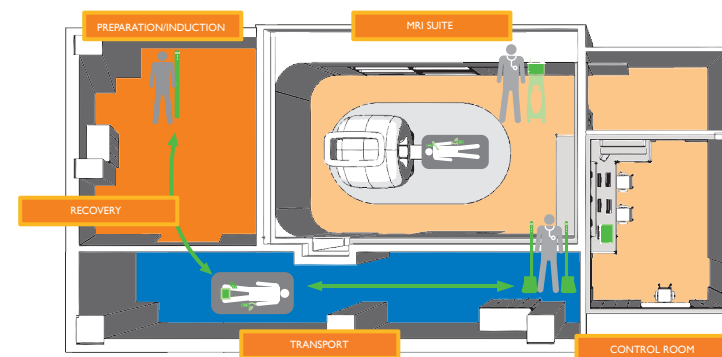
The Expression IP5's pleasant, friendly user interface features soft, appealing pastel colors on a bright, intuitive touch screen display that's easy to navigate and enjoyable to use.

Safety matters first.

And last.

Pre-scan			During scan				Post-scan
							
Check patients for metallic objects with the Ferroguard patient-screening wand.	Monitor patients continuously during transport with the Essential patient monitor.	Safeguard your imaging suite with the Ferroguard ferromagnetic detection system.	Expedite workflow and increase patient comfort with industry-leading wireless technology.	Make informed clinical decisions with ultimate confidence with the Expression patient monitoring system.	Trigger scans to correspond with patient ECG and SpO ₂ signals with wireless gating.	Integrate monitoring data with EMR and anesthesia record-keeping systems with the Expression IP5 portal.	Monitor patients remotely during transport and recovery with the Essential patient monitor.

When solutions revolve around the patient, complex MRI sedation studies are simplified. Our goal is to design solutions to be safer, smarter, and simpler. By easily combining the wireless Invivo Essential, Expression, Expression IP5 and the MRI scanner with Ferroguard into one patient-centric solution, you work smarter, not harder.



Satisfied patients

With one connection to the patient from start to finish, Expression's wireless technology puts patients at ease in the MRI environment. It eliminates the physical constraints of conventional monitoring and the discomfort of repeated sensor attachments and removals.

Consistent care

Exclusive wireless technology enables continuous monitoring that helps streamline transitions during the MRI care process. You move patients through their studies quickly and easily, providing consistency during the care cycle.

Better resource use

A more efficient MRI exam means a more efficient MRI staff – with more time to spend interacting with patients on value-added activities. Various products in our portfolio help increase MRI exam efficiency while reducing costs – offering you more ways to meet your business objectives through better utilization of staff and equipment.

**Philips Healthcare and Invivo
are part of Royal Philips Electronics**

How to reach us

Websites:

www.ExpressionMR.com

www.invivocorp.com

www.philips.com

Phone numbers:

U.S.: (877) 468-4861

International: +31 (0) 499 378 299

E-mail:

U.S.: Info@invivocorp.com

International: contact@invivocorp.com



Please visit www.philips.com/



© 2012 Koninklijke Philips Electronics N.V.
All rights are reserved.

Philips Healthcare reserves the right to make changes in specifications and/or to discontinue any product at any time without notice or obligation and will not be liable for any consequences resulting from the use of this publication.

Model Number: 865471
Part Number: 452296289731